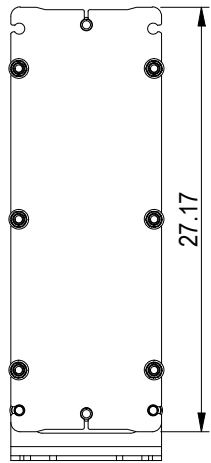
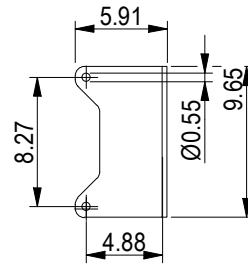
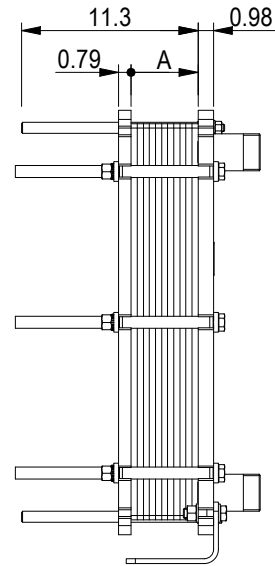


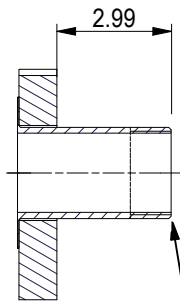
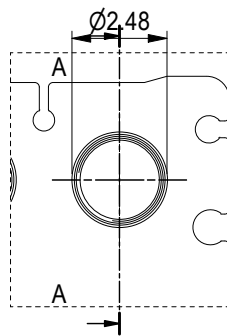
PRESSURE PLATE
(MOVABLE)



Space between pressure plate and supporting column should be kept free from fixed installations!



ASME B1.20.1 - 2-11.5 NPT, ALLOY 316L, 101 mm
S1, S2, S3, S4 A-A:

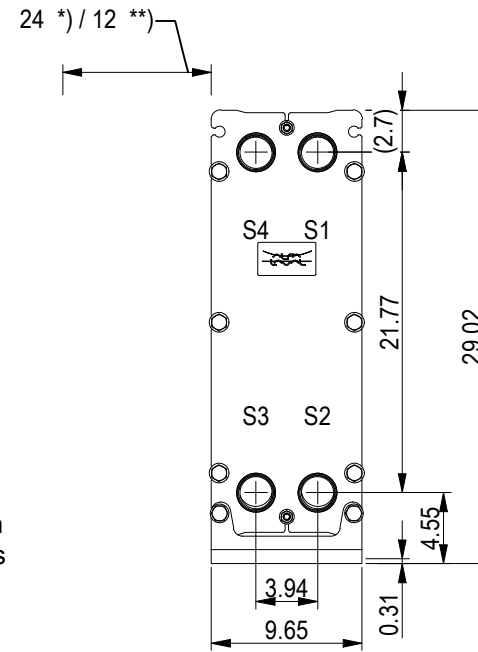


ASME B1.20.1 - 2-11.5 NPT
NO. OF UNITS

1

null GPM
null GPM

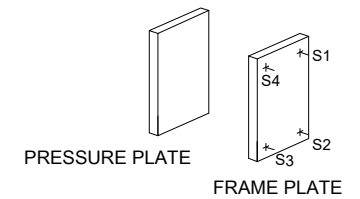
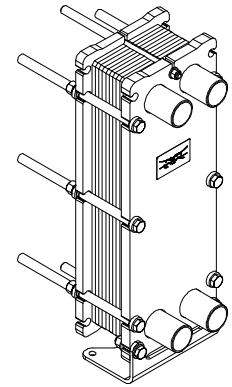
FRAME PLATE



*) Recommended free space for opening and closing to be applied on both sides

** Free space can be reduced to this distance on one of the sides

All dimensions in inches



| | |
|--------------------------|--------------|
| APPROX. OUTER DIMENSIONS | |
| LENGTH | 11.8 in |
| WIDTH | 10.2 in |
| HEIGHT | 27.6 in |
| APPROX. WEIGHTS | |
| NET WEIGHT, EMPTY | 174 lb |
| WEIGHT FULL OF WATER | 186 lb |
| PLATE MATERIAL | ALLOY 316 |
| PLATE THICKNESS | 0.5 mm |
| GASKET | NBRP Clip-on |

CHANNEL ARRANGEMENT 1*17 ML / 1*17 MH



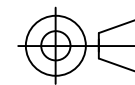
www.alfalaval.com

DRAWING
GASKETED PLATE HEAT EXCHANGER

T5-BFG

ASME
Code Section VIII Div.1

MAWP 145 psi at 150.1 °F
MDMT 32.0 °F at 145 psi
Designed and constructed in accordance with the 2019 ASME Code.



8240171464
T5-BFG, 35 plates

Do not use this drawing for foundation bolting or piping layout

DATE 6/1/22
REVISION 0